



Technical Service BULLETIN

April 13, 2001

Title:

DOOR MIRROR GLASS SERVICE PARTS

Models:

'97 – '01 4Runner & '00 – '01 Tacoma

BO013-01

BODY

Introduction Outside rear view mirror glass replacement **sub-assemblies** are available for 4Runner vehicles and Tacoma trucks with electric mirrors. Instructions on how to replace the mirror glass and part numbers are listed below. **As a reminder, it is not necessary to replace the entire mirror assembly, as this service part is available.**

- Applicable Vehicles**
- 1997 – 2001 model year **4Runner** vehicles.
 - 2000 – 2001 model year **Tacoma** vehicles **with electric remote mirrors.**

**Production
Change
Information**

MODEL	STARTING VIN
4Runner	JT2GN8#R#10190218
	JT2HN8#R#10333769
	JT2HN8#R#19049317
Tacoma with Electric Remote Mirrors	#####YZ708890

NOTE:

The part numbers described in this bulletin are for reference only. Always consult the parts microfiche for the correct part number.

**Parts
Information**

MODEL	MODEL YEAR	MIRROR GLASS PART NUMBER
4Runner	2000/2001	87961-35751 (LH)
		87931-3D010 (RH)
		87961-35821 (LH) Heated
		87931-3D020 (RH) Heated
Tacoma	2000/2001	87961-35751 (LH)
		87931-35840 (RH)
4 Runner	1999	87947-35230 (LH)
		87917-35240 (RH)
		87947-35740 (LH) Heated
		87917-35830 (RH) Heated
	1997 & 1998	87947-35230 (LH)
		87917-35240 (RH)

**Warranty
Information**

MODEL YEAR	OP CODE	DESCRIPTION	TIME	OPN	T1	T2
2000-2001	BD1006	R & R Mirror Glass	0.1	Same as Replacement Part	99	*
1997-1999	BD1007		0.5		99	*

- * Use a T2 that best describes the customer concern. Both a T1 & T2 code must be entered for the claim to be processed.

Applicable Warranty*:

This repair is covered under the Toyota Comprehensive Warranty. This warranty is in effect for 36 months or 36,000 miles, whichever occurs first, from the vehicle's in-service date.

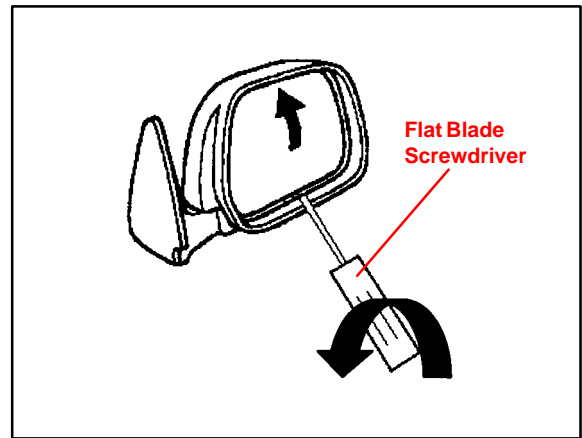
- * Warranty application is limited to correction of a problem based upon a customer's specific complaint.



Toyota Supports ASE Certification

**Replacement
Procedure**
'00-'01 MY
4Runner &
Tacoma

1. Adjust mirror so that the lower edge of the glass is sticking out away from the assembly's edge.
2. Place a broad flat blade screwdriver into the recessed area of the glass housing at the bottom edge of the glass and pry the glass from the assembly.
3. On vehicles with heated mirrors, disconnect the heater element connector.
4. Remove the glass from the assembly.
5. To install new glass, reattach the heater element connector (if necessary) and snap the new mirror into place.
6. Snap the mirror in place using your thumb and index finger snapping the glass to the white frame behind it.

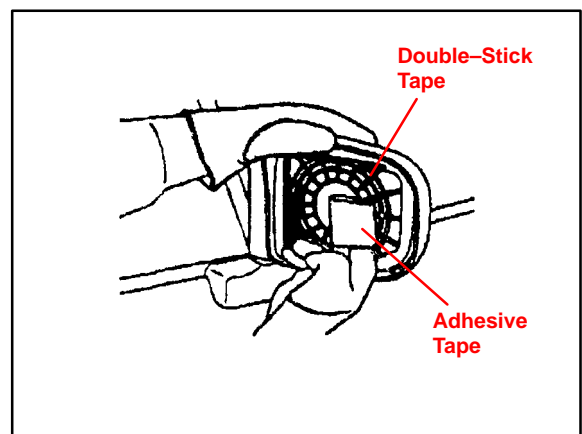
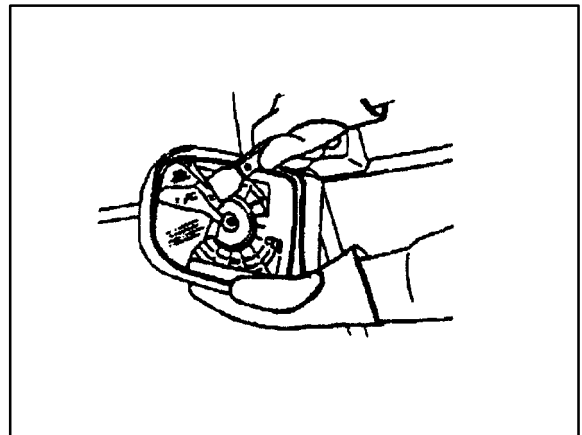


**Replacement
Procedure**
'97-'99 MY
4Runner

CAUTION:
Wear leather gloves and safety glasses.

1. Remove mirror glass.
 - A. Using a scraper, take out the original mirror glass.
 - B. Clear away fragments of mirror glass from the body.
 - C. Using adhesive tape, clean off the old double-stick tape from the mirror holder.

NOTE:
Do not use a solvent to remove the old double-stick tape; this may damage the plastic.

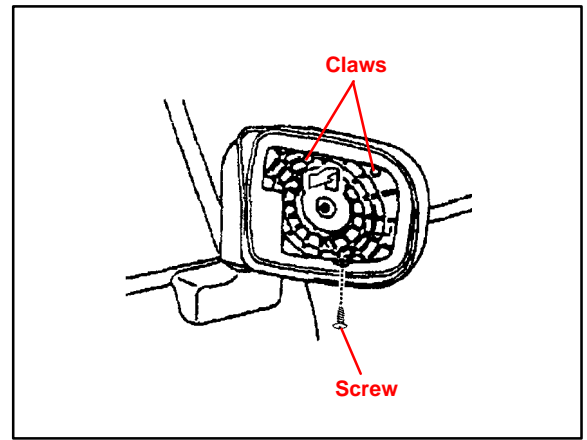


**Replacement
Procedure**
'97–'99 MY
4Runner
(Continued)

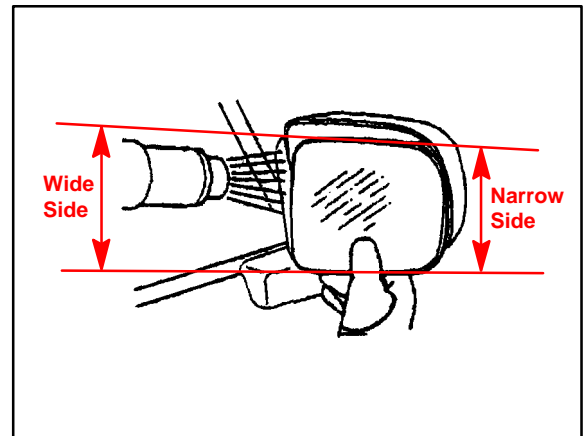
2. Remove the mirror holder.
 - A. Remove the screw.
 - B. Disconnect the claws of the mirror holder as shown, and remove the mirror holder.

NOTE (With Heated Mirrors):

Use caution when removing the mirror holder since the wire harness is directly behind the mirror.



3. Install new mirror glass into the glass holder.
 - A. Remove the backing paper from the rear of the new mirror glass.
 - B. Install the narrow side of the mirror glass to the mirror holder.
 - C. Using a heat gun, heat the wide side of the mirror holder for approximately 1 minute.
 - D. Attach the mirror holder.



4. Install the mirror holder.
5. Inspect mirror operation.